

## 3.2 Public High School Outcomes

### The Importance

High School statistics represent a culmination of the public school systems' efforts. The number of children dropping out of school before graduation without entering a GED program represents the public school system's failure to impart the importance of education on those children. The number of students going on to further their education after high school represents public school children who have recognized the direct relationship between education and successful, fulfilling lives.

### About this indicator

This indicator uses annual data from the New York State Education Department, Office of Research Evaluation & Innovation to examine trends in the dropout rate and the percent of graduates going on to college. The State Education Department defines a dropout as a student who left school before graduation for any reason except death and who did not enter another school or high school equivalency preparation program. The dropout rate is the number of annual dropouts divided by total number of 9-12 students for that year.

Students going on to college are defined as high school graduates entering four-year, two year, or other post-secondary institutions. The percent of students going to college is the number going to college divided by the number of graduates.

Due to a lack of consistent data for regions outside New York State, this indicator does not include regional comparisons.

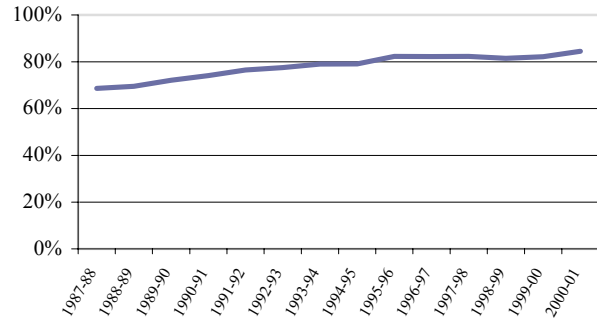
### Sources for this Indicator

New York State Education Department, Office of Research Evaluation & Innovation, Public School Data.

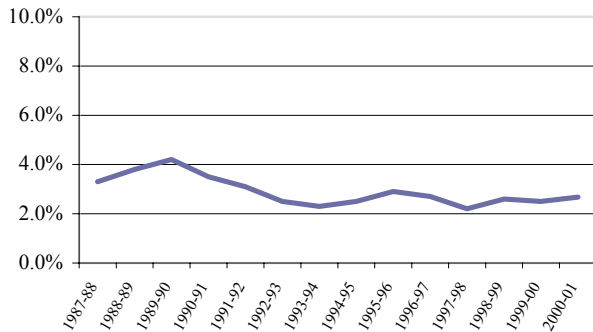
## High School results in the Capital District

In 1986, only 69% of the Capital District's high school graduates went on to college. That number has increased consistently each year with the class of 2000 sending more than 85% of its graduates on to college. Only a few, rural school districts are significantly below this mark, while the urban and suburban school districts are all close to or above 85%. The Capital District level of graduates going on to college is well above the statewide average of 80%. The State, like the Capital District has been making consistent progress in the percent of students going on to college.

Percent of Capital District High School Graduates Continuing to College



Capital District Annual High School Dropout Rate



Since the 1991-92 school year, the Capital District's dropout rate has held steady between 2% and 3%, with the low-water mark at 2.2% in 1997-98. The most recent records show that the dropout rate was 2.7% in the 2000-2001 school year. Before 1991-92, the dropout rate was well above 3% and as high as 4.2% in 1989-90. The Region's 2000-01 dropout rate is well below the New York State rate of 3.8%.