

P.L. 94-171 VOTING DISTRICT/STATE LEGISLATIVE DISTRICT OUTLINE MAP (CENSUS 2000)

GEOGRAPHIC AREAS LEGEND

SYMBOL	NAME STYLE
*****	INTERNATIONAL
*****	AIR (FEDERAL)
*****	AIR (State)
*****	TDSA
///////	STATE
#####	COUNTY
#####	MINOR CIVIL DIV ¹
#####	Incorporated Place ¹
#####	Census Designated Place ¹
—————	Voting District ²
●●●●●	SLD-Senate
▲▲▲▲▲	SLD-House
□□□□□	Minority
□□□□□	Inset
□□□□□	Out Area

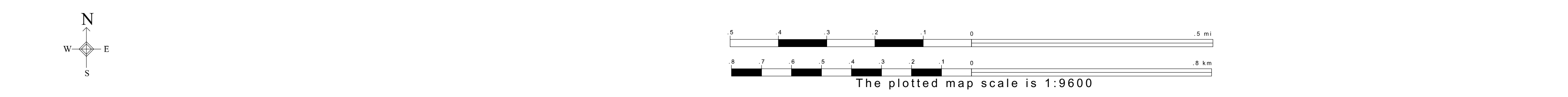
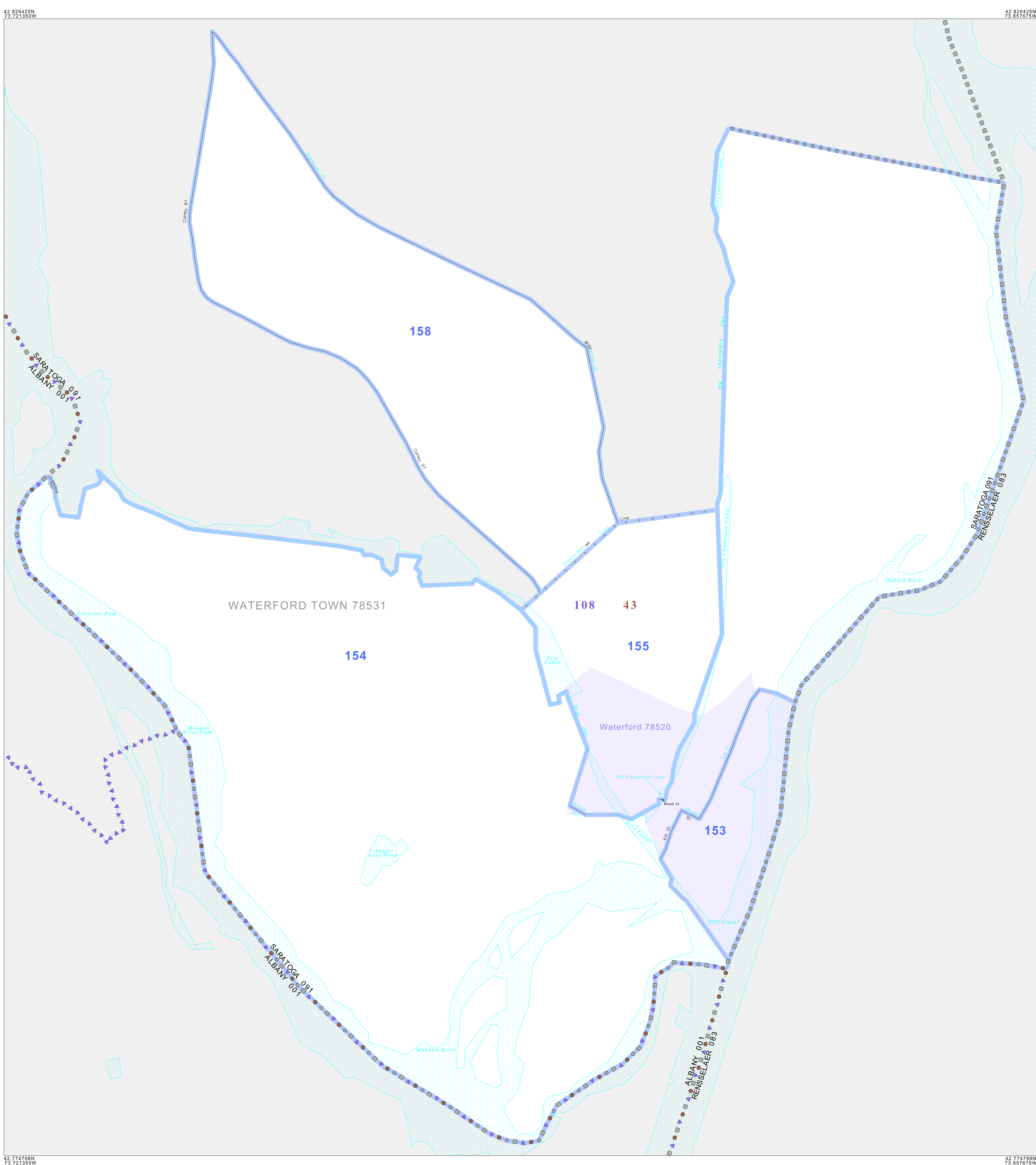
Abbreviation Reference: AIR = American Indian Reservation; TDSA = Tribal Designated Statistical Area; SDAISA = State Designated American Indian Statistical Area

1 A "*" following a place name indicates that the place is coterminous with a MCD. "A" indicates that the place is also a false MCD. In both cases, the MCD name is shown only when it differs from the place name.

2 A "*" following a VTD code indicates an actual voting district. Its absence indicates that the VTD is a pseudo voting district or no information is available as to its status.

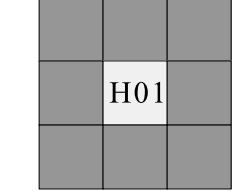
Voting Districts

Code	Name
153	Voting District 200001
154	Voting District 200002 200004 200005
155	Voting District 200003
158	Voting District 200006

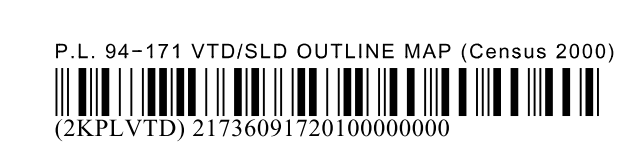


Sheet Location within County

Key to Adjacent Sheets



ST: New York (36)
 COU: Saratoga (091)
 INSET SHEET H01



All legal boundaries and names are as of January 1, 2000. The boundaries shown on this map are for Census Bureau statistical data collection and tabulation purposes only; their depiction and designation for statistical purposes does not constitute a determination of jurisdictional authority or rights of ownership or entitlement. U.S. DEPARTMENT OF COMMERCE Economics and Statistics Administration U.S. Census Bureau