

P.L. 94-171 VOTING DISTRICT/STATE LEGISLATIVE DISTRICT OUTLINE MAP (CENSUS 2000)

GEOGRAPHIC AREAS LEGEND

SYMBOL	NAME STYLE
*****	INTERNATIONAL
*****	AIR (FEDERAL)
///////	AIR (State)
◆◆◆◆◆	TDSA
///////	STATE
□□□□□	COUNTY
○●○●○●	MINOR CIVIL DIV. ¹
■	Incorporated Place ¹
■	Census Designated Place ¹
—	Voting District ²
●●●●●	SLD-Senate
▲▲▲▲▲	SLD-House
⋮	Boundary
⋮	Inset
⋮	Out Area

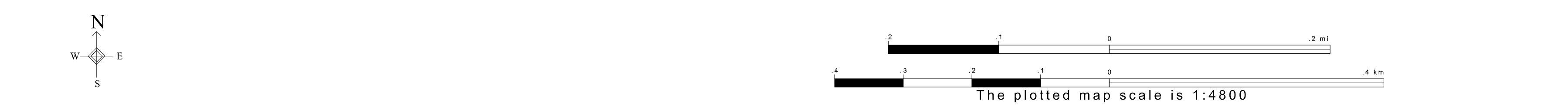
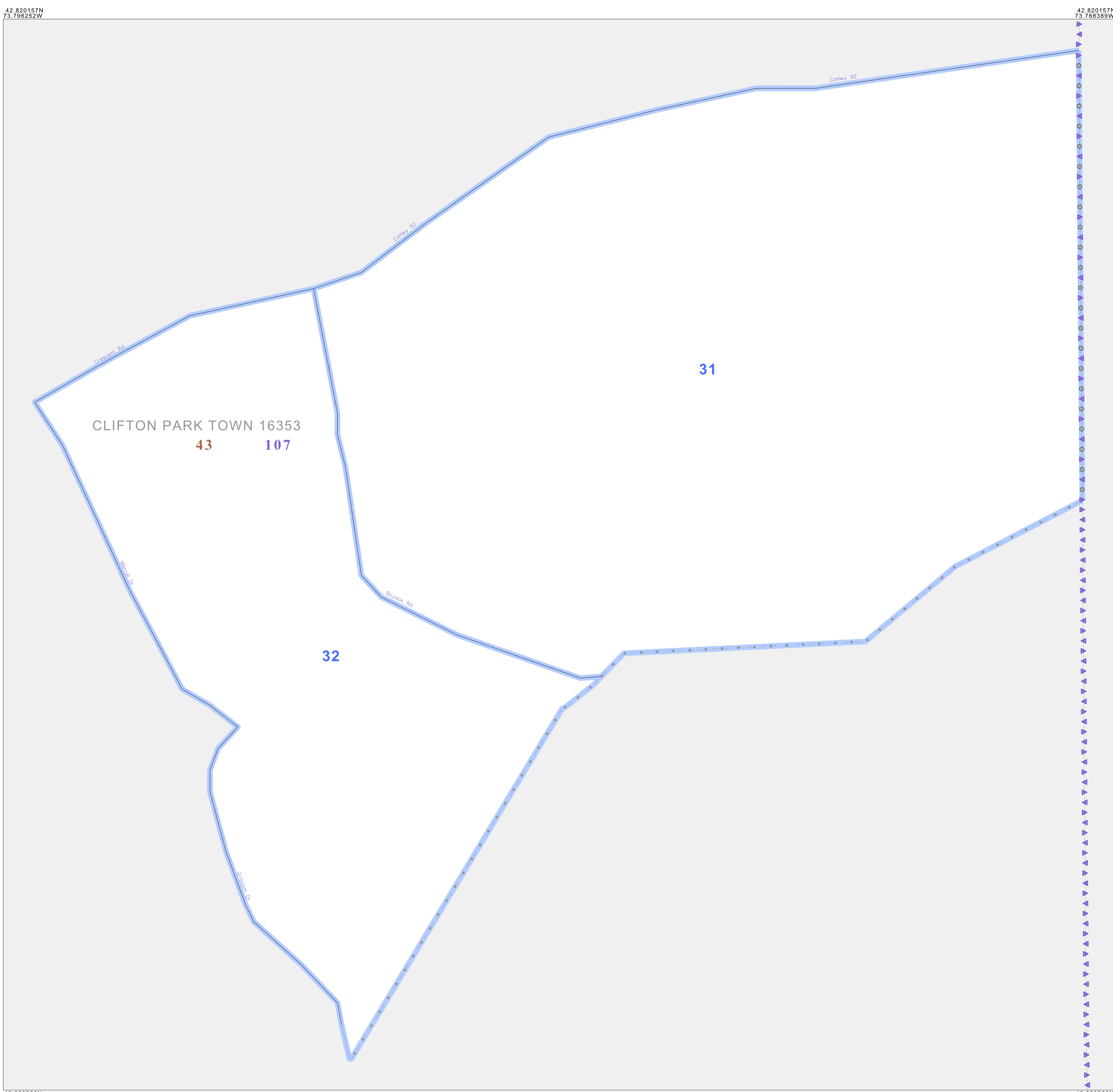
Abbreviation Reference: AIR = American Indian Reservation; TDSA = Tribal Designated Statistical Area; SDAISA = State Designated American Indian Statistical Area

1 A "-" following a place name indicates that the place is coterminous with a MCD. A "-" indicates that the place is also a false MCD. In both cases, the MCD name is shown only when it differs from the place name.

2 A "-" following a VTD code indicates an actual voting district. Its absence indicates that the VTD is a pseudo voting district or no information is available as to its status.

Voting Districts

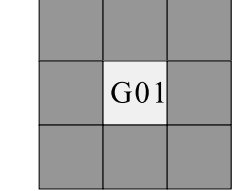
Code	Name
31	Voting District 00018
32	Voting District 00019



Sheet Location within County



Key to Adjacent Sheets



ST: New York (36)
 COU: Saratoga (091)
 INSET SHEET G01

