

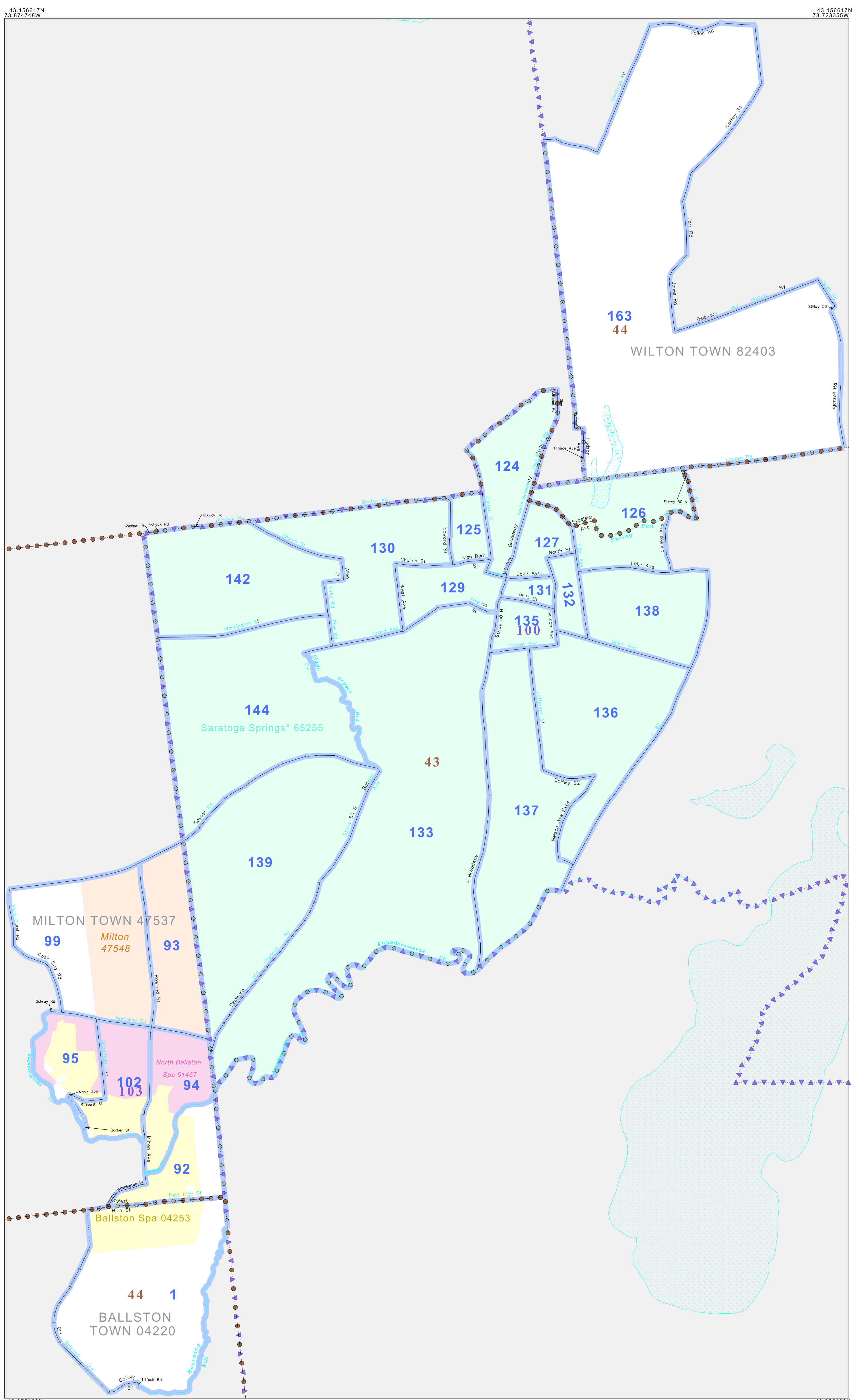
P.L. 94-171 VOTING DISTRICT/STATE LEGISLATIVE DISTRICT OUTLINE MAP (CENSUS 2000)

GEOGRAPHIC AREAS LEGEND

SYMBOL	NAME STYLE
*****	INTERNATIONAL
*****	AIR (FEDERAL)
*****	AIR (State)
*****	TDSA
-----	STATE
-----	COUNTY
-----	MINOR CIVIL DIV ¹
-----	Incorporated Place ¹
-----	Census Designated Place ¹
-----	Voting District ²
-----	SLD-Senate
-----	SLD-House

Military Inset Out Area

Abbreviation Reference: AIR - American Indian Reservation; TDSA - Tribal Designated Statistical Area; SDAISA - State Designated American Indian Statistical Area
 1 A " " following a place name indicates that the place is coterminous with a MCD. A " " indicates that the place is also a false MCD. In both cases, the MCD name is shown only when it differs from the place name.
 2 A " " following a VTD code indicates an actual voting district. Its absence indicates that the VTD is a pseudo voting district or no information is available as to its status.



Voting Districts

Code	Name
1	Voting District 910001 010007
90	Voting District 130001
91	Voting District 130002
94	Voting District 130003
95	Voting District 130004
96	Voting District 130005
100	Voting District 180001
101	Voting District 180001
102	Voting District 180001
103	Voting District 180001
104	Voting District 180001
105	Voting District 180001
106	Voting District 180003 180005
107	Voting District 180004
108	Voting District 180004
109	Voting District 180005
110	Voting District 180007
111	Voting District 180008
112	Voting District 180009
113	Voting District 180010 180011
114	Voting District 180011
115	Voting District 180011
116	Voting District 180013
117	Voting District 180014
118	Voting District 180015
119	Voting District 180015 180018 180020
120	Voting District 180016
121	Voting District 180019
122	Voting District 180021
123	Voting District 210003 210004 210007 210008
124	Voting District 210003 210004 210007 210008
125	Voting District 210003 210004 210007 210008
126	Voting District 210003 210004 210007 210008
127	Voting District 210003 210004 210007 210008
128	Voting District 210003 210004 210007 210008
129	Voting District 210003 210004 210007 210008
130	Voting District 210003 210004 210007 210008
131	Voting District 210003 210004 210007 210008
132	Voting District 210003 210004 210007 210008
133	Voting District 210003 210004 210007 210008
134	Voting District 210003 210004 210007 210008
135	Voting District 210003 210004 210007 210008
136	Voting District 210003 210004 210007 210008
137	Voting District 210003 210004 210007 210008
138	Voting District 210003 210004 210007 210008
139	Voting District 210003 210004 210007 210008
140	Voting District 210003 210004 210007 210008
141	Voting District 210003 210004 210007 210008
142	Voting District 210003 210004 210007 210008
143	Voting District 210003 210004 210007 210008
144	Voting District 210003 210004 210007 210008
145	Voting District 210003 210004 210007 210008
146	Voting District 210003 210004 210007 210008
147	Voting District 210003 210004 210007 210008
148	Voting District 210003 210004 210007 210008
149	Voting District 210003 210004 210007 210008
150	Voting District 210003 210004 210007 210008
151	Voting District 210003 210004 210007 210008
152	Voting District 210003 210004 210007 210008
153	Voting District 210003 210004 210007 210008
154	Voting District 210003 210004 210007 210008
155	Voting District 210003 210004 210007 210008
156	Voting District 210003 210004 210007 210008
157	Voting District 210003 210004 210007 210008
158	Voting District 210003 210004 210007 210008
159	Voting District 210003 210004 210007 210008
160	Voting District 210003 210004 210007 210008
161	Voting District 210003 210004 210007 210008
162	Voting District 210003 210004 210007 210008
163	Voting District 210003 210004 210007 210008



All legal boundaries and names are as of January 1, 2000. The boundaries shown on this map are for Census Bureau statistical data collection and tabulation purposes only; their depiction and designation for statistical purposes does not constitute a determination of jurisdictional authority or rights of ownership or entitlement. U.S. DEPARTMENT OF COMMERCE Economics and Statistics Administration U.S. Census Bureau

Sheet Location within County:
 Key to Adjacent Sheets:
 ST: New York (36)
 COU: Saratoga (091)
 INSET SHEET C01

P.L. 94-171 VTD/SLD OUTLINE MAP (Census 2000)
 (CKPLVTD) 217369161010000000