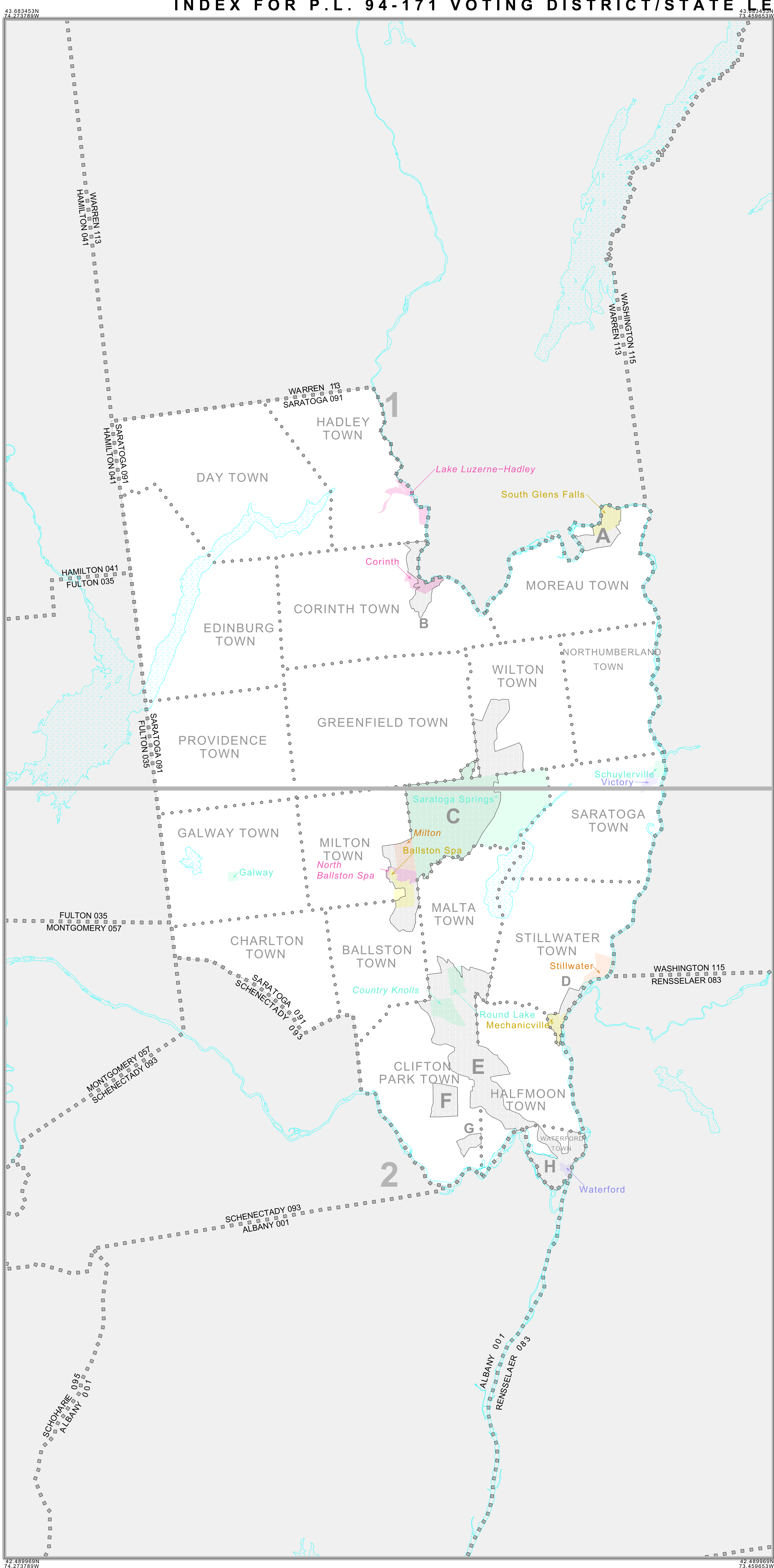


INDEX FOR P.L. 94-171 VOTING DISTRICT/STATE LEGISLATIVE DISTRICT OUTLINE MAP (CENSUS 2000)



### INDEX MAP LEGEND

SYMBOL	NAME STYLE
*****	INTERNATIONAL
-----	AIR (FEDERAL)
-----	Trust Land/HLL
-----	OTSA/ANVSA/TDSA
-----	TRIBAL SUBDIVISION
-----	AIR (State)
-----	SDA/SA
-----	ANRC
#####	STATE
#####	COUNTY
#####	MINOR CIVIL DIV. <sup>1</sup>
#####	Consolidated City
#####	Incorporated Place <sup>1</sup>
#####	Census Designated Place <sup>1</sup>
[Inset Box]	Inset
[Out Area Box]	Out Area

Abbreviation Reference: AIR = American Indian Reservation; Trust Land = Off-Reservation Trust Land; ANRC = Alaska Native Regional Corporation; TDSA = Tribal Designated Statistical Area; Tribal Subdivision = American Indian Tribal Subdivision; SDA/SA = State Designated American Indian Statistical Area; ANRC = Alaska Native Regional Corporation

<sup>1</sup> A "\*" following a place name indicates that the place is coextensive with a MCD. A "-" indicates that the place is also a false MCD. In both cases, the MCD name is shown only when it differs from the place name.

P.L. 94-171 VOTING DISTRICT/STATE LEGISLATIVE DISTRICT OUTLINE MAP LEGEND (CENSUS 2000)

SYMBOL DESCRIPTION	SYMBOL	NAME STYLE
International	*****	CANADA
American Indian Reservation (Federal)	*****	L'ANSE RES (1880)
Off-Reservation Trust Land, Hawaiian Home Land	*****	T1880
Oklahoma Tribal Statistical Area, Alaska Native Village Statistical Area, Tribal Designated Statistical Area	*****	KAW OTSA (5340)
American Indian Tribal Subdivision	*****	SHONTO (620)
American Indian Reservation (State)	*****	Tama Res (4125)
State Designated American Indian Statistical Area	*****	Lumbee (9815)
Alaska Native Regional Corporation	*****	NANA ANRC 52120
State or Statistically Equivalent Entity	#####	NEW YORK 36
County or Statistically Equivalent Entity	#####	ERIE 029
Minor Civil Division (MCD) <sup>1</sup>	#####	PIKE TWP 59742
Census County Division (CCD)	#####	KULA CCD 91890
Consolidated City	#####	Milford 47500
Incorporated Place <sup>1</sup>	#####	Rome 63418
Census Designated Place (CDP) <sup>1</sup>	#####	Zena 84187
Voting District (VTD) <sup>2</sup>	#####	141*
State Legislative District - Senate (SLD-Senate)	#####	072
State Legislative District - House (SLD-House)	#####	023

FEATURE	SYMBOL	FEATURE	SYMBOL
All Roads	---	Perennial Stream of Shoreline	~~~~~
Railroad	---+---+---	Intermittent Stream of Shoreline	~~~~~
Pipeline or Power Line	---+---	Large River or Lake	~~~~~
Ridge, Fence, or Other Physical Feature	---+---	Glacier	~~~~~
Nonvisible Boundary or Feature Not Elsewhere Classified	.....	Military Installation	~~~~~
Inset Area	[Inset Box]	Outside Subject Area	[Out Area Box]

Where international, state, and/or county boundaries coincide, the map shows the boundary symbol for only the highest-ranking of these boundaries.

<sup>1</sup> A "\*" following a place name indicates that the place is coextensive with a MCD. A "-" following an incorporated place name indicates that the place is also a false MCD. In both cases, the MCD name is shown only when it differs from the place name.

<sup>2</sup> A "\*" following a VTD code indicates an actual voting district. Its absence indicates that the VTD is a pseudo voting district or no information is available as to its status.

