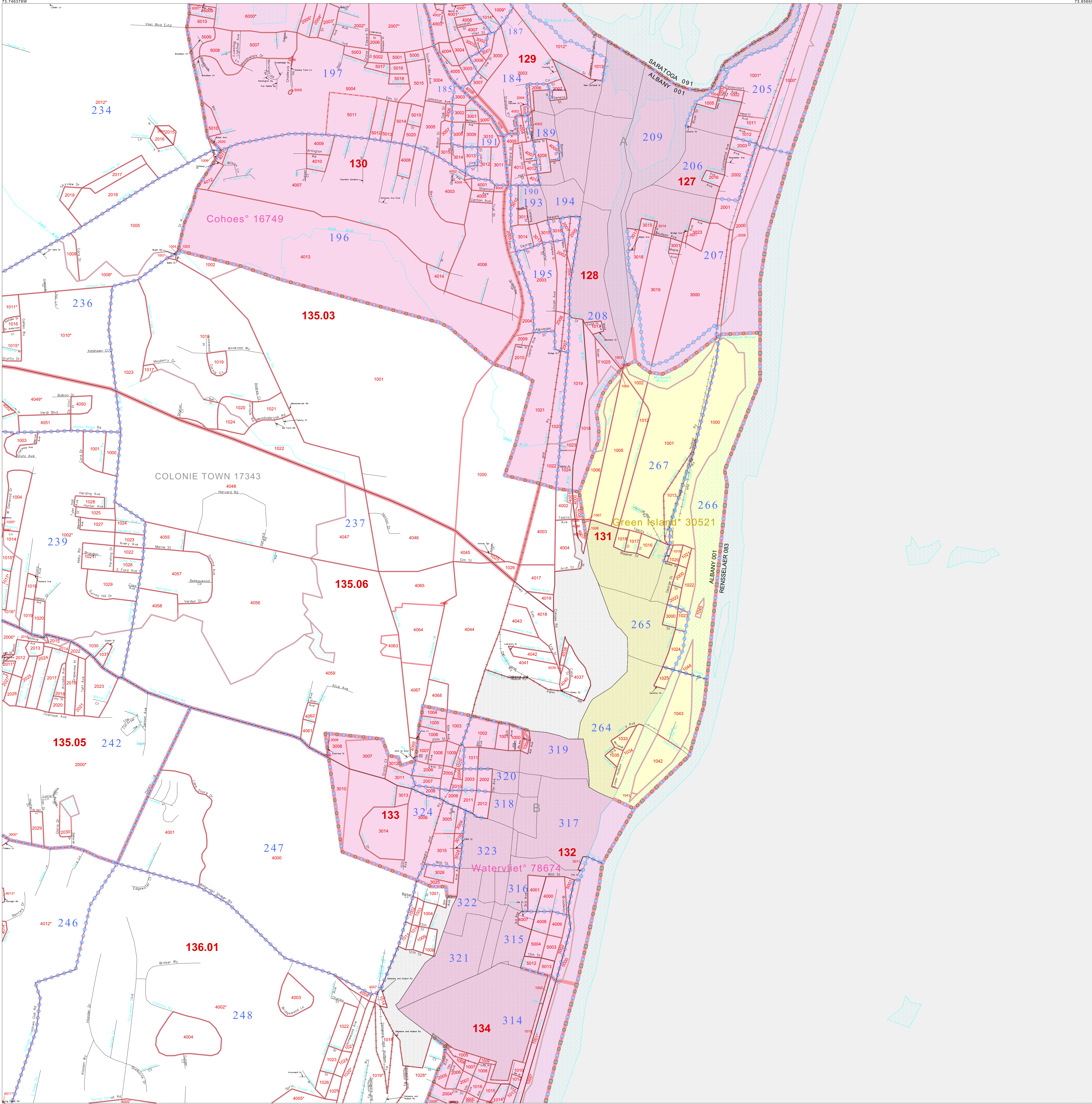


P. L. 94-171 COUNTY BLOCK MAP (CENSUS 2000)

42 730628N
73.746378W

42 730628N
73.956604W



GEOGRAPHIC AREAS LEGEND

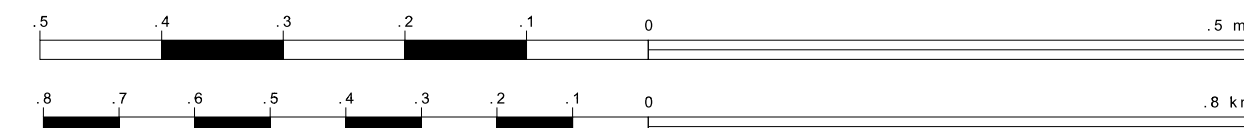
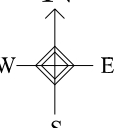
SYMBOL	NAME STYLE
*****	INTERNATIONAL
*****	AIR (FEDERAL)
*****	AIR (State)
*****	TDSA
*****	STATE
*****	COUNTY
*****	MINOR CIVIL DIV.
*****	Incorporated Place ¹
*****	Census Designated Place ¹
.....	Corporate Offset Boundary
.....	Voting District ²
.....	Census Tract
.....	BLOCK ³

Military: Inset Out Area

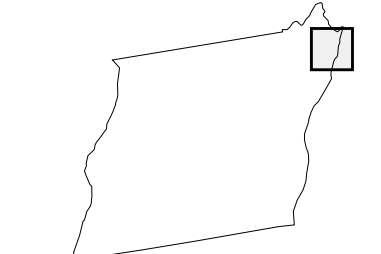
Abbreviation Reference: AIR = American Indian Reservation; TDSA = Tribal Designated Statistical Area
¹ A "*" following a place name indicates that the place is contiguous with a MCD. A "-" indicates that the place is also a false MCD. In both cases, the MCD name is shown only when it differs from the place name.
² A "*" following a VTD code indicates an actual voting district. Its absence indicates that the VTD is a pseudo-voting district or no information is available as to its status.
³ A "*" following a block number indicates that the block number is repeated elsewhere in the block.

42 730628N
73.746378W

42 730628N
73.956604W



Sheet Location within County



Key to Adjacent Sheets

1	2
7	8
13	14

ST: New York (36)
 COU: Albany (001)
 SHEET 8 OF 37 PARENT SHEETS



All legal boundaries and names are as of January 1, 2000. The boundaries shown on this map are for Census Bureau statistical data collection and tabulation purposes only; their depiction and designation for statistical purposes does not constitute a determination of jurisdictional authority or rights of ownership or entitlement. U.S. DEPARTMENT OF COMMERCE Economics and Statistics Administration U.S. Census Bureau