

P. L. 94-171 COUNTY BLOCK MAP (CENSUS 2000)

42 740628N  
74 105473W

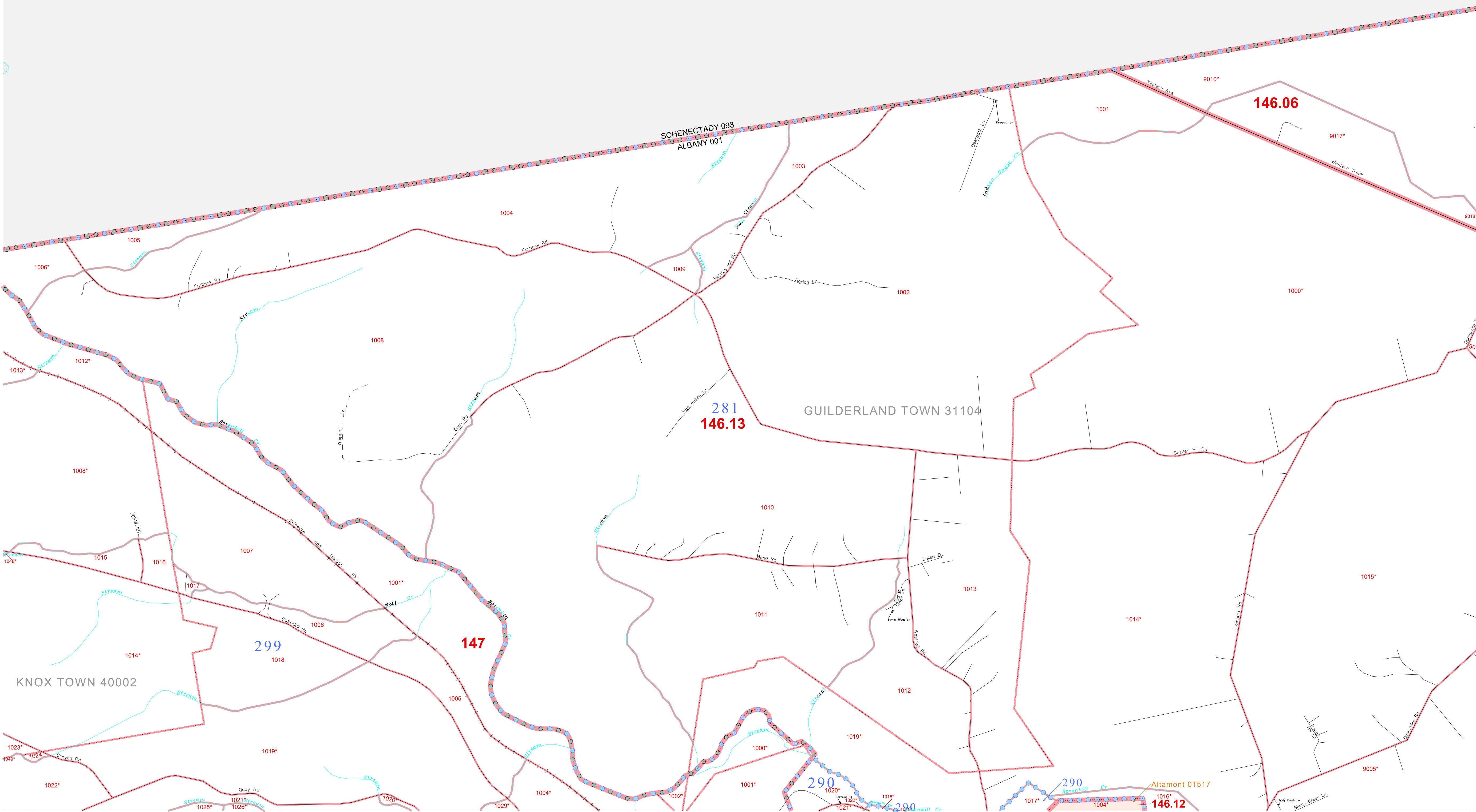
42 740628N  
74 019699W

**GEOGRAPHIC AREAS LEGEND**

SYMBOL	NAME STYLE
*****	<b>INTERNATIONAL</b>
*****	<b>AIR (FEDERAL)</b>
*****	<b>AIR (State)</b>
*****	<b>TDSA</b>
//////	<b>STATE</b>
	<b>COUNTY</b>
o-o-o-o-o	<b>MINOR CIVIL DIV.<sup>1</sup></b>
■ ■ ■ ■ ■	<b>Incorporated Place<sup>1</sup></b>
■ ■ ■ ■ ■	<b>Census Designated Place<sup>1</sup></b>
.....	<b>Corporate Offset Boundary</b>
● ● ● ● ●	<b>Voting District<sup>2</sup></b>
—	<b>Census Tract</b>
—	<b>BLOCK<sup>3</sup></b>

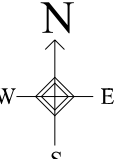
Military  Inset  Out Area

Abbreviation Reference: AIR = American Indian Reservation; TDSA = Tribal Designated Statistical Area  
 1 A \* \* \* following a place name indicates that the place is contiguous with a MCD. A \* \* indicates that the place is also a false MCD. In both cases, the MCD name is shown only when it differs from the place name.  
 2 A \* \* following a VTD code indicates an actual voting district. Its absence indicates that the VTD is a pseudo voting district or no information is available as to its status.  
 3 A \* \* following a block number indicates that the block number is repeated elsewhere in the block.

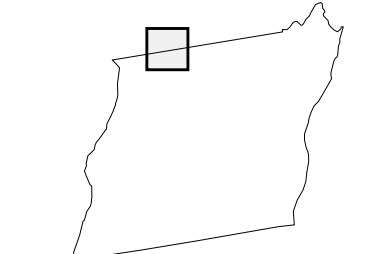


42 714318N  
74 105473W

42 714318N  
74 019699W



Sheet Location within County



Key to Adjacent Sheets

3	4	5
9	10	11

ST: New York (36)  
COU: Albany (001)  
SHEET 4 OF 37 PARENT SHEETS



All legal boundaries and names are as of January 1, 2000. The boundaries shown on this map are for Census Bureau statistical data collection and tabulation purposes only; their depiction and designation for statistical purposes does not constitute a determination of jurisdictional authority or rights of ownership or entitlement. U.S. DEPARTMENT OF COMMERCE Economics and Statistics Administration U.S. Census Bureau