

# New York State's Sustainability Programs: Climate Smart Communities Cleaner, Greener Communities

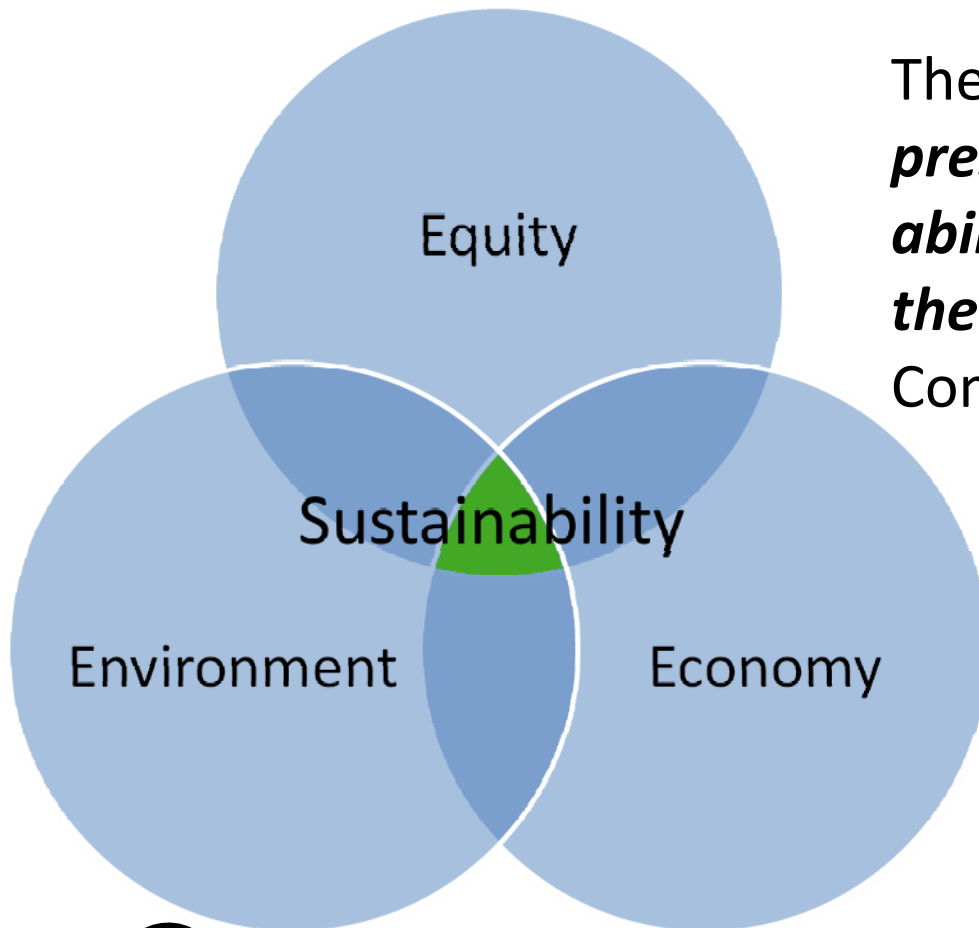


Overview Presentation |  
June 20, 2012

Presented by:  
Kim Lundgren



## What is Sustainability?



The ability to ***“meet the needs of the present without compromising the ability of future generations to meet their own needs”*** – The Brundtland Commission, United Nations



# Climate Change

## Annual Average Climate Projections

	<b>Baseline 1981-2011*</b>	<b>2020s</b>	<b>2050s</b>	<b>2080s</b>
Air temperature	48 ° F	+ 1.5 to 3.0 ° F	+3.0 to 5.5 ° F	+4.0 to 8.0 ° F
Precipitation	39 in	0 to +5%	0 to +5%	+5 to 10%
Sea level rise		<b>Inches</b>	<b>Inches</b>	<b>Inches</b>
GCM-based	n/a	+1 to +4	+5 to +9	+8 to +18
Rapid ice-melt scenario	n/a	~4 to +9	~17 to +26	~37 to +50

\*The baseline data is from NOAA and it is based on the weather station at Albany. The ClimAID region, Region 5, did not align with the Capital District so the baseline data could not be used.





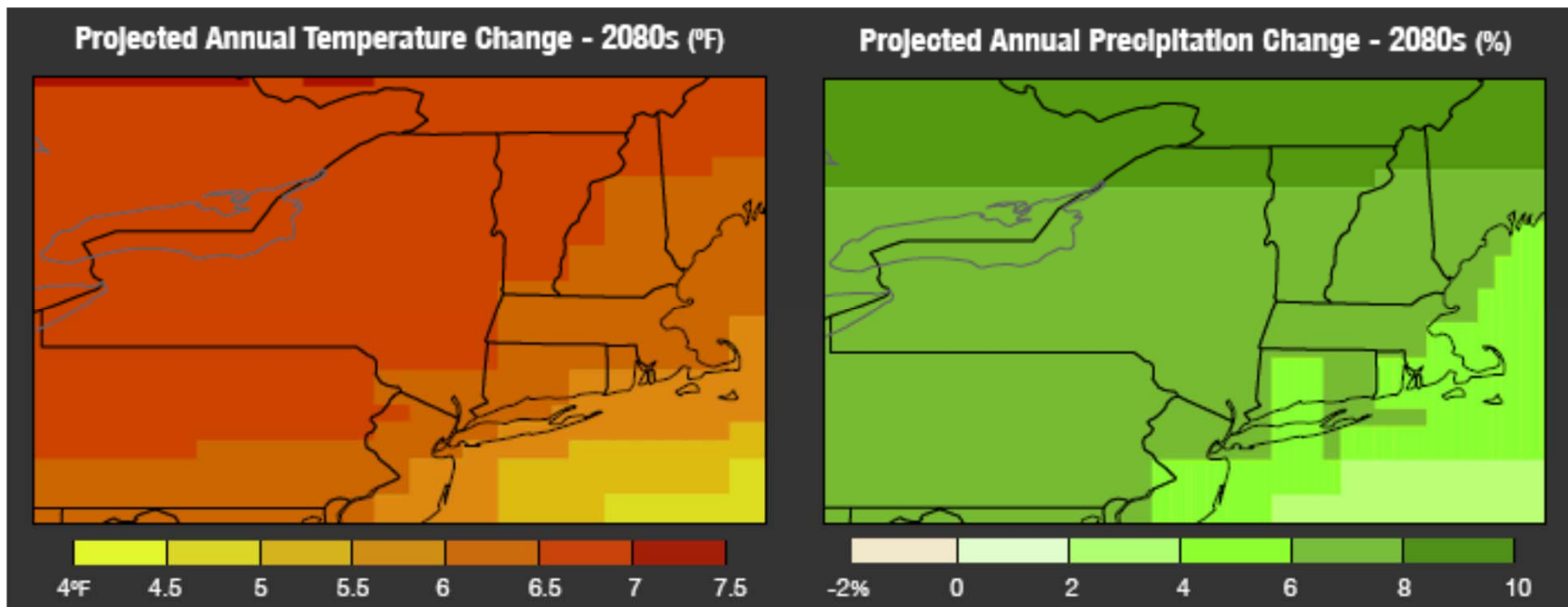
## Local Impacts of Climate Change

- More frequent days with temperatures above 90°F - health impacts and increased energy use
- Increased drought and harsh weather events – increased erosion/impact on infrastructure
- Rising sea-surface temperatures and sea levels- infrastructure impact/wastewater treatment facilities/transportation/central business district
- Rising energy costs for heating and cooling





# Projected Annual Temperature and Precipitation Change, 2080





## The Programs

- Climate Smart Communities Regional Coordinator Pilot Program
  - Technical Assistance program
  - Four Pilot Regions- Capital Region, Central NY, Hudson Valley, Long Island
- Cleaner Greener Communities
  - Regional Sustainability Planning and Project Implementation
  - All ten regions of New York State concurrently





## Climate Smart Communities

- Officially launched in 2009
- Sponsored by five New York state agencies-DEC, NYSERDA, DOS, PSC, DOT
- A pledge to reduce greenhouse gas (GHG) emissions
- 103 local governments statewide
- The Pilot:
  - Funded by the Regional Greenhouse Gas Initiative (RGGI)
  - Four regions in the State
  - Three year pilot



# Climate Smart Communities

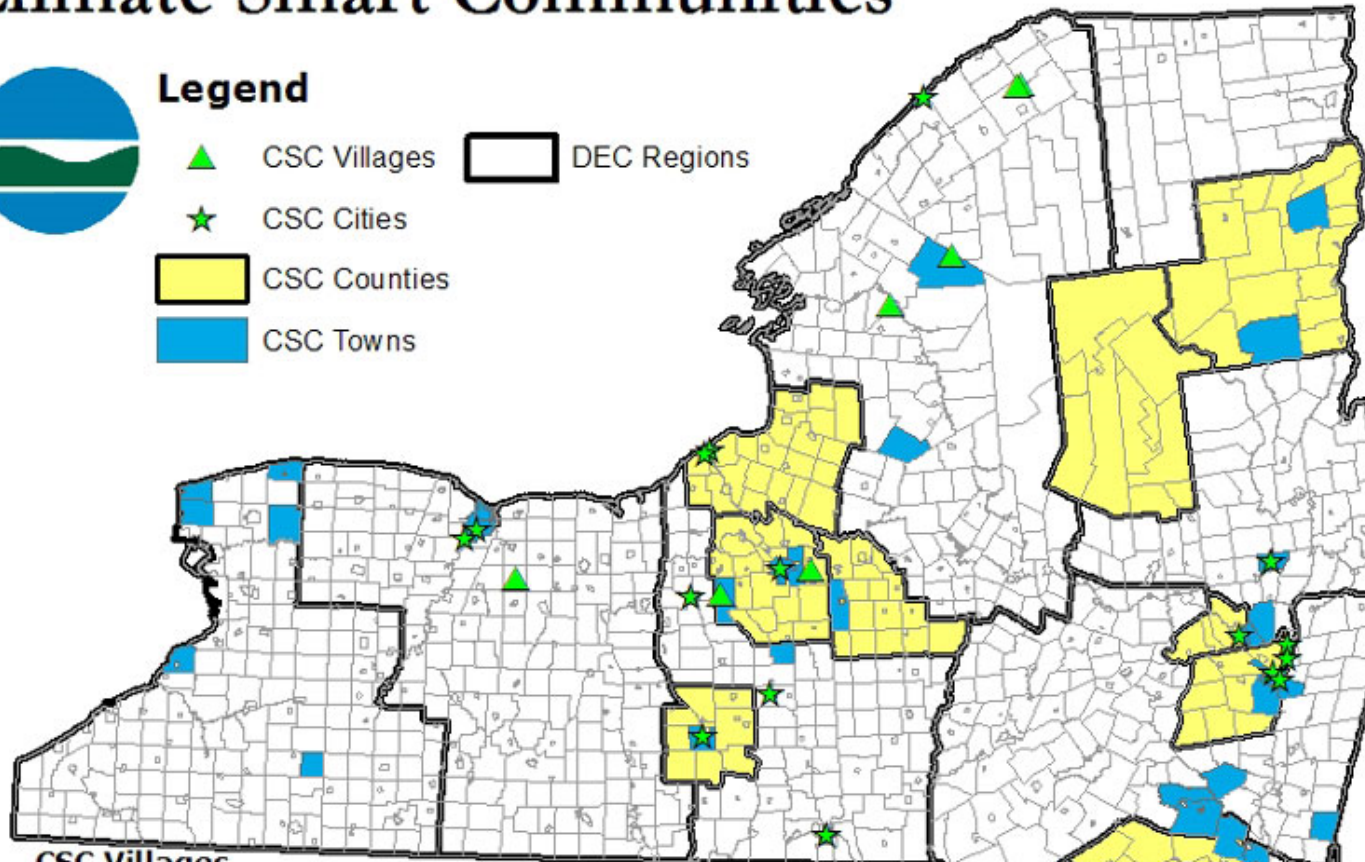


## Legend

-  CSC Villages
-  CSC Cities
-  CSC Counties
-  CSC Towns
-  DEC Regions

## CSC Towns

- Town of Babylon
- Town of Bedford
- Town of Bethlehem
- Town of Brookhaven
- Town of Cairo
- Town of Cazenovia
- Town of Clarkstown
- Town of Clifton Park
- Town of Copake
- Town of Cortlandt
- Town of Dewitt
- Town of Diana
- Town of East Greenbush
- Town of Evans
- Town of Greenburgh
- Town of Hunter
- Town of Irondequoit
- Town of Islip
- Town of Ithaca
- Town of Jewett
- Town of Lewis
- Town of Lewisboro
- Town of Lewiston
- Town of Lyndon
- Town of Mamaroneck
- Town of Mount Kisco
- Town of New Castle
- Town of Niskayuna
- Town of North Castle
- Town of North Hempstead
- Town of North Salem
- Town of Orangetown
- Town of Ossining
- Town of Porter
- Town of Pound Ridge
- Town of Preble
- Town of Red Hook
- Town of Rhinebeck
- Town of Rosendale
- Town of Royalton
- Town of Saugerties
- Town of Schroom
- Town of Skaneateles
- Town of Smithtown
- Town of Somers
- Town of Somerset
- Town of Woodbury
- Town of Yorktown



## CSC Villages

- Village of Ardsley
- Village of Croton-on-Hudson
- Village of Dobbs Ferry
- Village of East Rockaway
- Village of Fayetteville
- Village of Harrisville
- Village of Hastings-on-Hudson
- Village of Larchmont
- Village of Mamaroneck
- Village of Montebello
- Village of Mount Kisco
- Village of New Paltz
- Village of Norwood
- Village of Ossining
- Village of Port Chester
- Village of Port Jefferson
- Village of Skaneateles
- Village of Tarrytown
- Village of Victor
- Village of West Carthage
- Village of Woodsburgh

## CSC Cities

- City of Albany
- City of Auburn
- City of Beacon
- City of Binghamton
- City of Cohoes
- City of Cortland
- City of Ithaca
- City of Kingston
- City of New Rochelle
- City of Ogdensburg
- City of Oswego
- City of Peekskill
- City of Rensselaer
- City of Rochester
- City of Saratoga Springs
- City of Schenectady
- City of Syracuse
- City of Watervliet
- City of Yonkers

## CSC Counties

- Albany County
- Essex County
- Hamilton County
- Madison County
- Onondaga County
- Orange County
- Oswego County
- Rodland County
- Schenectady County
- Sullivan County
- Tompkins County
- Ulster County



0 25 50 100 Miles





## Climate Smart Communities Pledge

1. Pledge to Combat Climate Change by becoming a Climate Smart Community
2. Set Goals, Inventory Emissions, Move to Action
3. Decrease Energy Demand for Local Government Operations
4. Encourage Renewable Energy for Local Government Operations.
5. Realize Benefits of Recycling and Other Climate Smart Solid Waste Management Practices
6. Promote Climate Protection Through Community Land Use Tools
7. Plan for Adaptation for Unavoidable Climate Change
8. Support a Green Innovation Economy
9. Inform and Inspire the Public
10. Commit to an Evolving Process





## Climate Smart Community Coordinators

- **Pilot regions:** Capital District, Central New York, Long Island, Lower Hudson Valley
- **Regional coordinators:** CSC outreach & support
  - Develop regional GHG inventories
  - Facilitate local GHG inventories & climate action planning
  - Help with local climate goals and actions
  - Provide education & training





## CSC Outreach & Support

- Define and Support Local Climate Action
  - Delivery of direct technical assistance
- Facilitate and Assist Local GHG Inventories
  - Guidance documents
  - Tools
  - Training materials
- Facilitate Local Climate Action Planning
  - Best practices
  - Templates
  - Identification of funding





## Provide CSC Outreach & Support

- Identify and Support Anchor Projects
  - Minimal effort
  - Refer to CGC process/outcomes
- Provide Education and Training
  - Assess needs
  - Conduct two training webinars
  - Conduct one in-person training





## Climate Smart Communities – Capital District

- 6 County Region
  - Albany, Columbia, Greene, Rensselaer, Saratoga, Schenectady
- Currently 16 CSC member communities
- The Team:
  - Prime: Capital District Regional Planning Commission
  - Subs: VHB and Climate Action Associates
- 12 month project



# Climate Smart Communities- Capital District





## Climate Smart Communities – Results

- Move existing CSC members further along through pledge milestones
- Recruit new communities into the program
- Create a regional network of support
- Develop useful resources and templates to further action





## Cleaner Greener Communities

- Launched by Governor Cuomo in 2010
- Two phase Regional Sustainability effort
  - Phase I: Planning
  - Phase II: Implementation
- Funded by RGGI
  - Phase I: \$10 million
  - Phase II: \$90 million







## Cleaner Greener Communities- Capital District

- **8 Month Project**
- **Development of a Regional Sustainability Plan**
- **The Team**
  - Prime: Clough Harbor Associates
  - Subs: VHB, PlaceMatters, Behan Communications, Brendle Group



# Cleaner Greener Communities- Capital Region





## Cleaner Greener Communities- Tasks

- Regional GHG Inventory:
  - Only for areas not covered by Climate Smart Communities
- Development of Sustainability Metrics and Targets
- Identification and Prioritization of Strategies
  - Executive Committee
  - Technical Committees
  - Public Outreach



# Cleaner Greener Communities- Technical Committees/Sustainability Plan Focus Areas

- Climate Adaptation
- Economic Development
- Energy
- Food Systems
- Governance\*
- Land Use and Livable Communities
- Transportation
- Waste
- Water

\* chapter only





## Cleaner Greener Communities– Results

- A region wide sustainability plan
- A set of regional priorities related to creating a more sustainable region
- Implementation of recommended projects through:
  - Competing for CGC implementation funds
  - Leveraging existing/other funding sources





## CSC/CGC Areas of Complement

- Six counties are in the Capital Region for both programs
- CGC recommended projects and CSC anchor projects
- CSC direct support will be in line with CGC regional goals
- Generally moving down a path towards a more sustainable future



**THANK YOU!**

Kim Lundgren

Climate & Energy Practice Leader

[klundgren@vhb.com](mailto:klundgren@vhb.com)

617.607.1581

