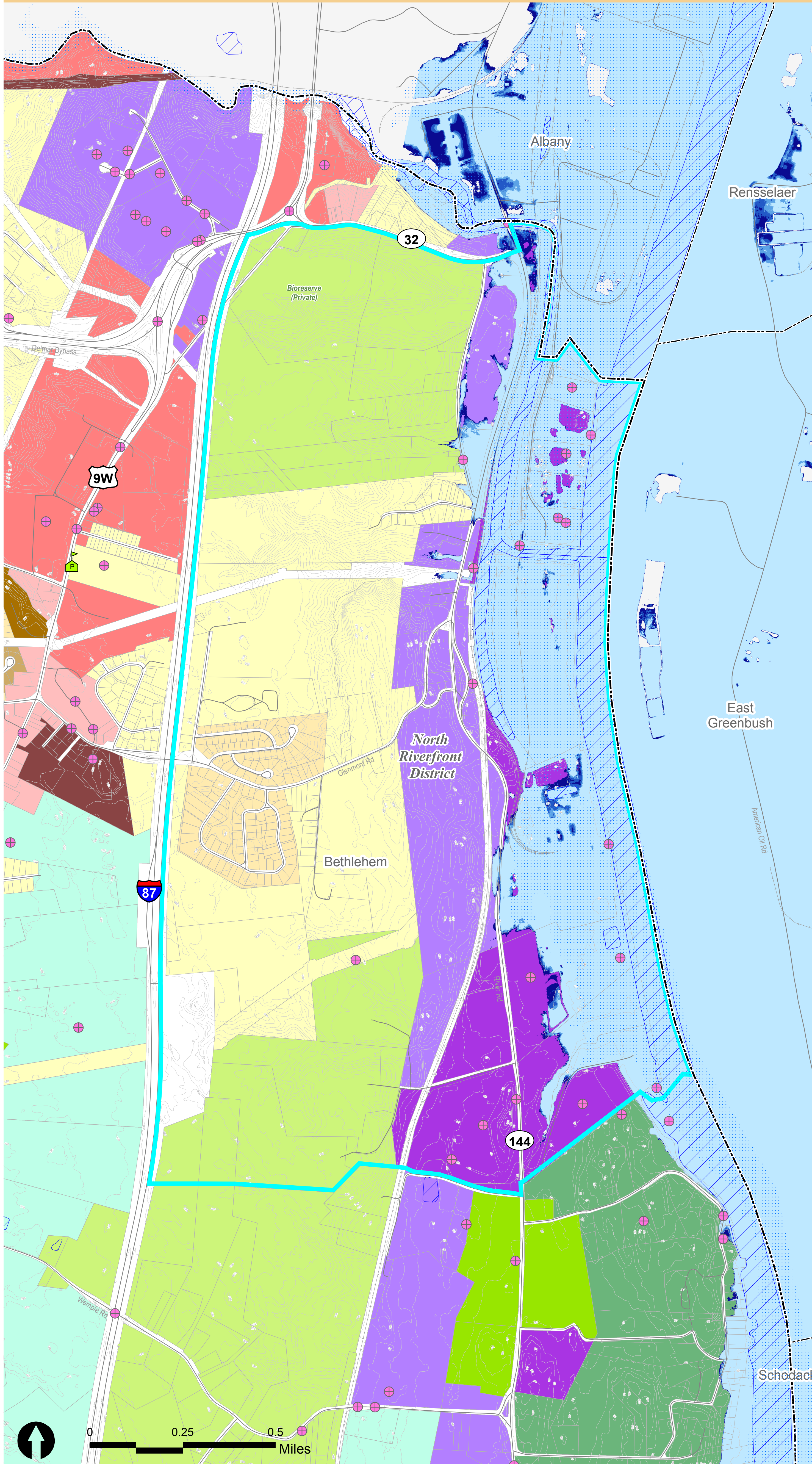


# North Riverfront District Projected Conservative Sea Level Rise Flooding Impact on Social and Environmental Features



## Legend

- Town Line (Bethlehem)
- Town Line (Other)
- Open Water (River and Pond)
- Roadways
- Railroad

## LWRP District

- North Riverfront District

## Sea Level Rise 100-Year Floodplain

### Projected Timeline (conservative)

- Existing 100-Year Floodplain
- 2020
- 2050
- 2080
- 2100

## Parcel and Zoning

- COMMERCIAL HAMLET (CH)
  - CORE RESIDENTIAL (CR)
  - GENERAL COMMERCIAL (C)
  - HAMLET (H)
  - HEAVY INDUSTRIAL (I)
  - MIXED ECONOMIC DEVELOPMENT (ME)
  - MULTI-FAMILY (MR)
  - PLANNED DEVELOPMENT DISTRICT (PDD)
  - RESIDENTIAL A (RA)
  - RESIDENTIAL B (RB)
  - RESIDENTIAL C (RC)
  - RESIDENTIAL LARGE LOT (RLL)
  - RURAL (R)
  - RURAL HAMLET (RH)
  - RURAL LIGHT INDUSTRIAL (RLI)
  - RURAL RIVERFRONT (RR)
- Public Schools
  - EPA FRS Facilities\*

\*EPA Facility Registry System (FRS) - The Facility Registry System (FRS) is a centrally managed database that identifies facilities, sites or places subject to environmental regulations or of environmental interest. More information on FRS: <http://www.epa.gov/enviro/html/fri/index.html>

Data Source: Town of Bethlehem, NYS GIS Clearinghouse, Scenic Hudson Sea Level Rise Projections (floodplain and census block data)

Date: April 2014