



**Capital District  
Regional Planning Commission  
October 20, 2010**

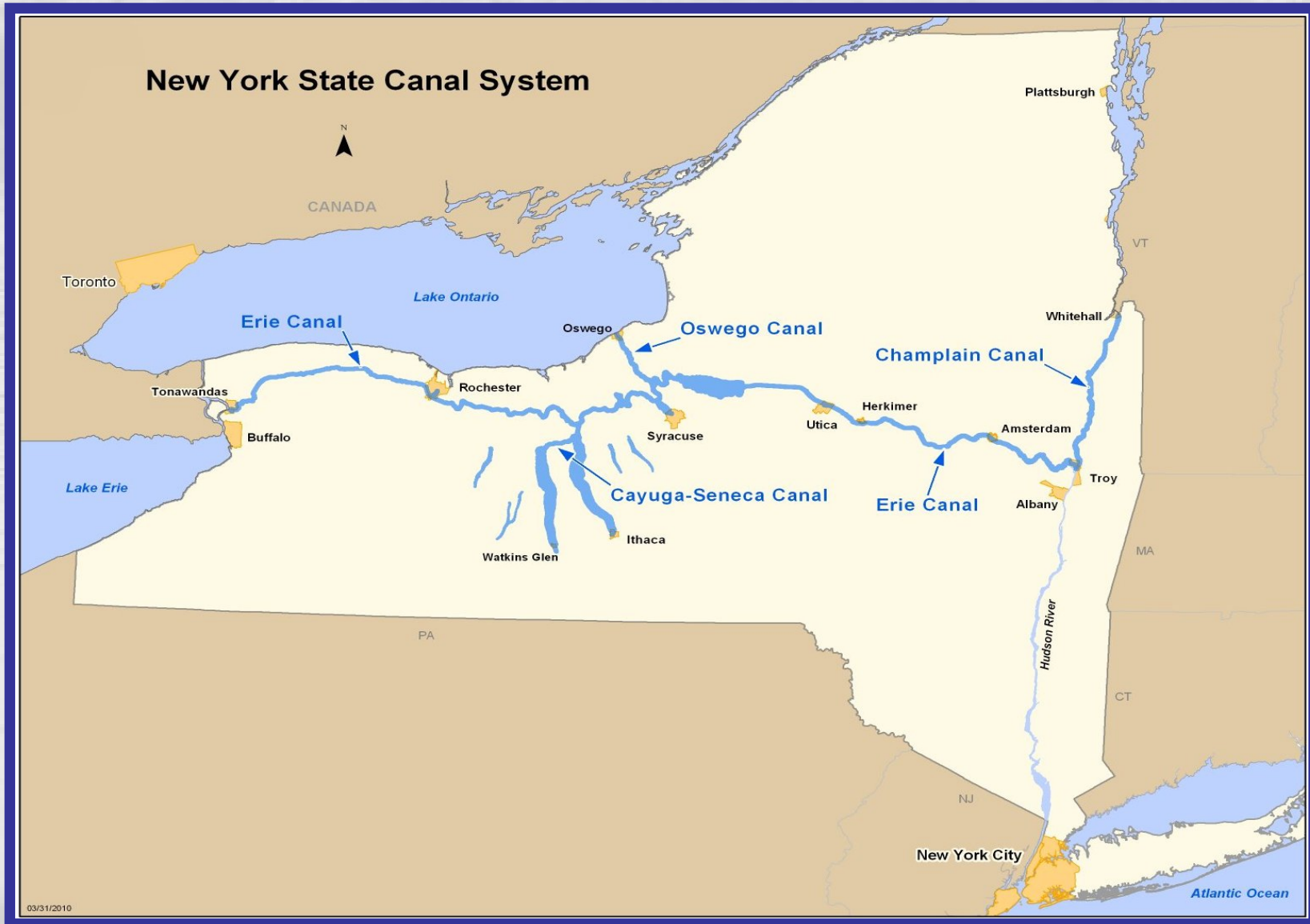
**The New York State Canal System:  
“It’s Still (Well, Kinda!) Your Ancestor’s Canal”**

**Carmella R. Mantello  
Director  
New York State Canal Corporation**

# The Famous Erie Canal



# The Canal System TODAY



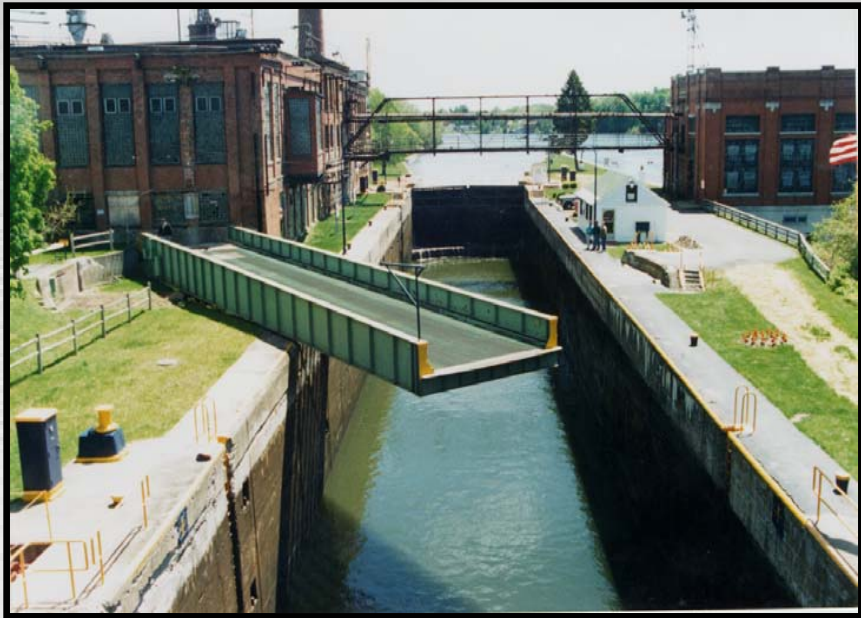
# Canal System Overview

- **Canal Corporation operates the Canal System**
  - subsidiary of the NYS Thruway Authority
- **Four waterways:**
  - **Erie Canal – 338 miles long**
  - **Champlain Canal – 60 miles long**
  - **Oswego Canal – 24 miles long**
  - **Cayuga-Seneca Canal – 12 miles long**
- **Includes approximately 1,800 structures, including 57 locks, 20 moveable bridges and other dams, walls, etc.**
- **Approximately 500-full time and 100 seasonal employees**



# The Canal System is... still an Engineering Marvel

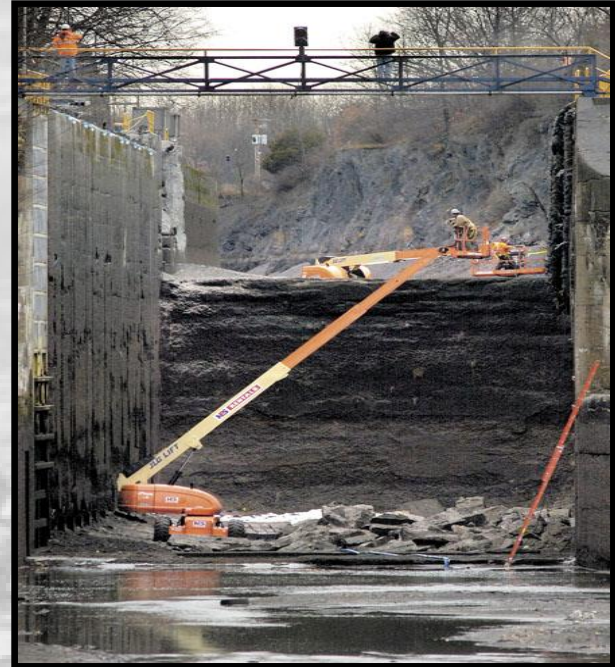






# Multi-Year Capital Plan

- Rehabilitation of Lock E-6 in Waterford, Saratoga County – Cost approximately \$16,500,000
- Rehabilitation of Lock O-5 in Minetto, Oswego County – Cost approximately \$11,500,000
- Canalway Trail Canastota to Erie Canal Village – Cost approximately \$2,500,000
- Canalway Trail, Schenectady – Cost approximately \$1,500,000





 **Ellcott**  
Serving the needs of Dredging Contractors

**NEW**  
**Coastal Dragon™**  
Improved Freeboard and Stability  
Tilting Spuds

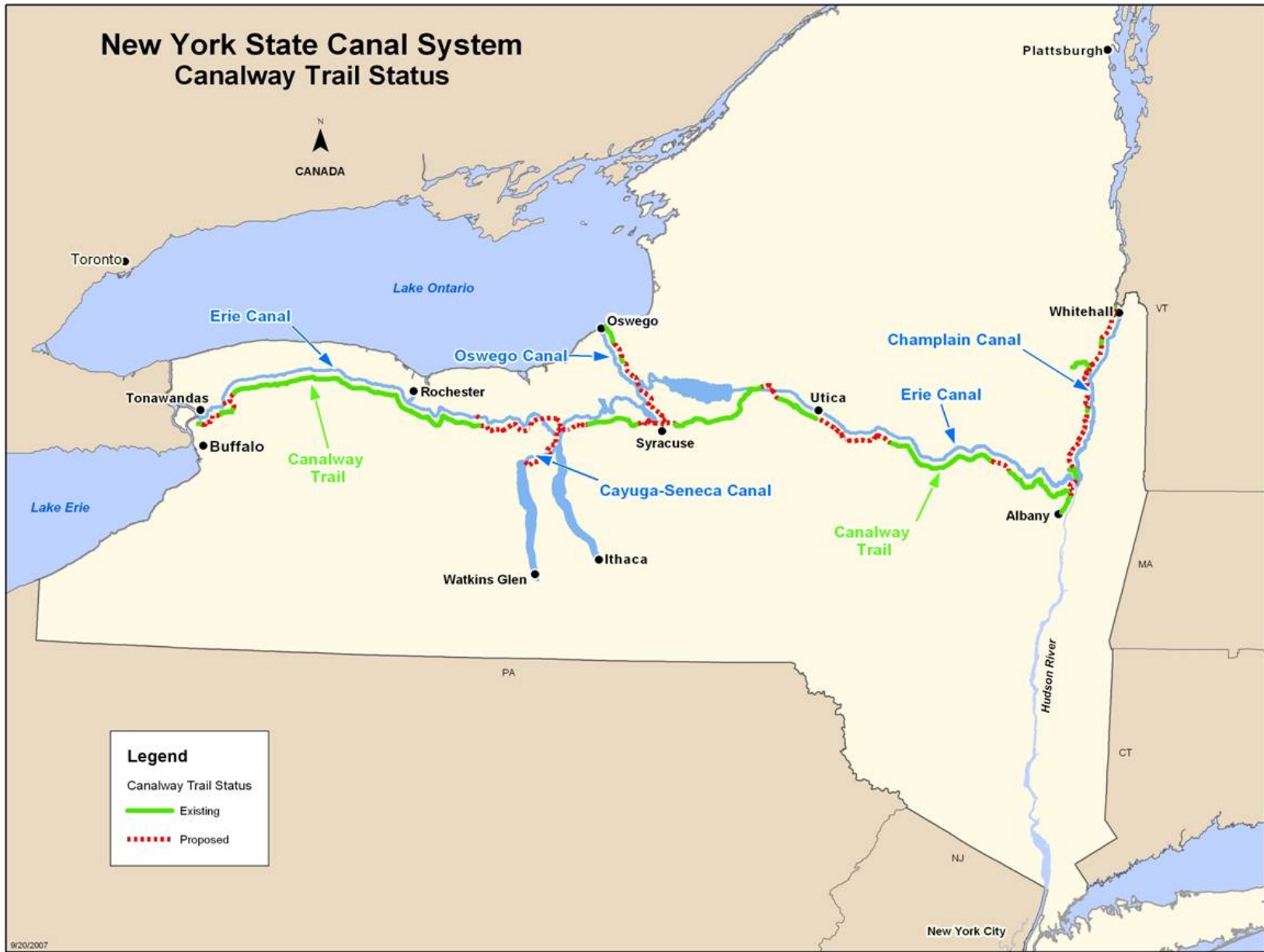


# NYS Canal System is also... a Land & Water Trail System

## *Canalway Trail*



# New York State Canal System Canalway Trail Status





# *Canalway Water Trail*





# Water Trail – Interactive On-Line Tool

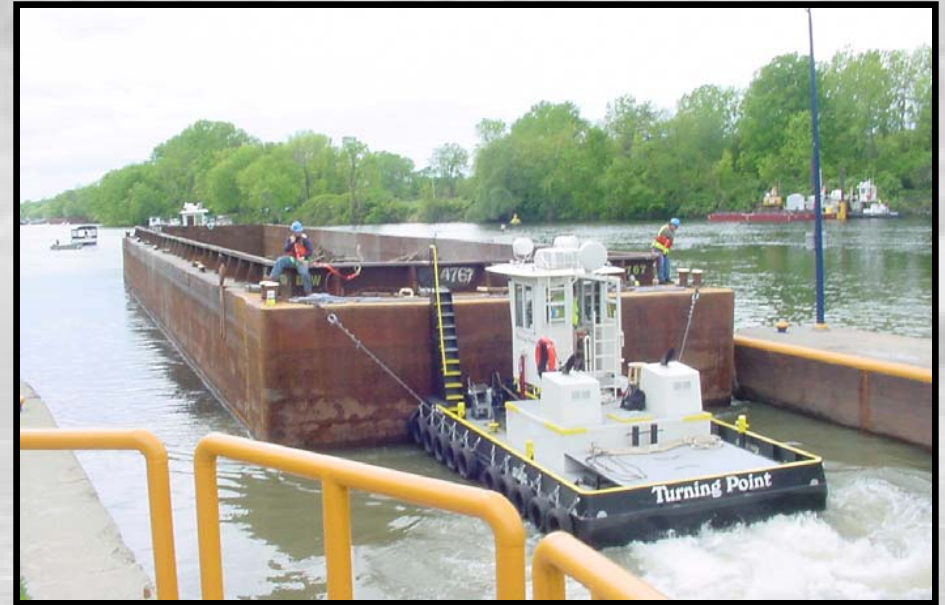
[www.canals.ny.gov/exvac/watertrail.html](http://www.canals.ny.gov/exvac/watertrail.html)

The screenshot displays the 'New York State Canals: Maps' web application. At the top, there is a navigation bar with 'NEW YORK STATE' and a large green banner with the word 'Maps' in a handwritten font. The main content area features a satellite map of a residential area with a red dot indicating a water trail location. A white popup window is open over this location, showing a photograph of a paved path leading to a pond. The popup has tabs for 'Amenities' and 'Images'. To the left of the map is a sidebar with navigation links: 'Return to Home', 'Return to Maps', 'CANALWAY WATER TRAIL MAP', 'Water Trail Locations', and instructions on how to use the map. Below these are search fields and buttons for 'Find Location', 'View Text Version', 'Download XML File', and 'Feedback/Info Request'. The bottom of the map includes a scale bar (1000 ft / 200 m) and a copyright notice: 'Imagery ©2010 DigitalGlobe, New York GIS, USDA Farm Service Agency, Crea Spot Image, GeoEye - Terms of Use'.

# The NYS Canal System is also (or still!)... a Commercial Highway







- **Commercial Shipping:**
  - increase in recent years
  - more energy efficient and environmentally friendly
- **NYSERDA funding feasibility study**
- **Canal System recently designated as a federal Marine Corridor**



# NYS Canal System is also... Revitalizing Communities



*St. Johnsville Marina*

*(Erie Canal Greenway Grant ribbon cutting)*

# Accomplishments to Date: Canal Revitalization

- \$250 million in local projects along the Canal System:
  - \$13 million to develop 7 harbors
  - \$18 million for Canalway Trail projects
  - More than \$200 million in local service port projects





# Erie Canal Greenway Grant Projects

- City of Albany - Mohawk Hudson Bike-Hike Trail (\$173,250)
- City of Cohoes - Cohoes Heritage Trail (\$225,000)
- Town of Waterford – Water Trail Dock & Amenities (Lock E2) (\$207,510)
- Essex County - Lake Champlain Visitors Center (\$225,000 )
- Town of Clifton Park – Riverview Landing Public Access (\$180,000)
- City of Schenectady – Canal Access, Interpretation & Visitor Services (\$225,000)



*Clifton Park*



*Colonie*



# NYS Canal System is also...

## Community Events, Celebrations & Festivals



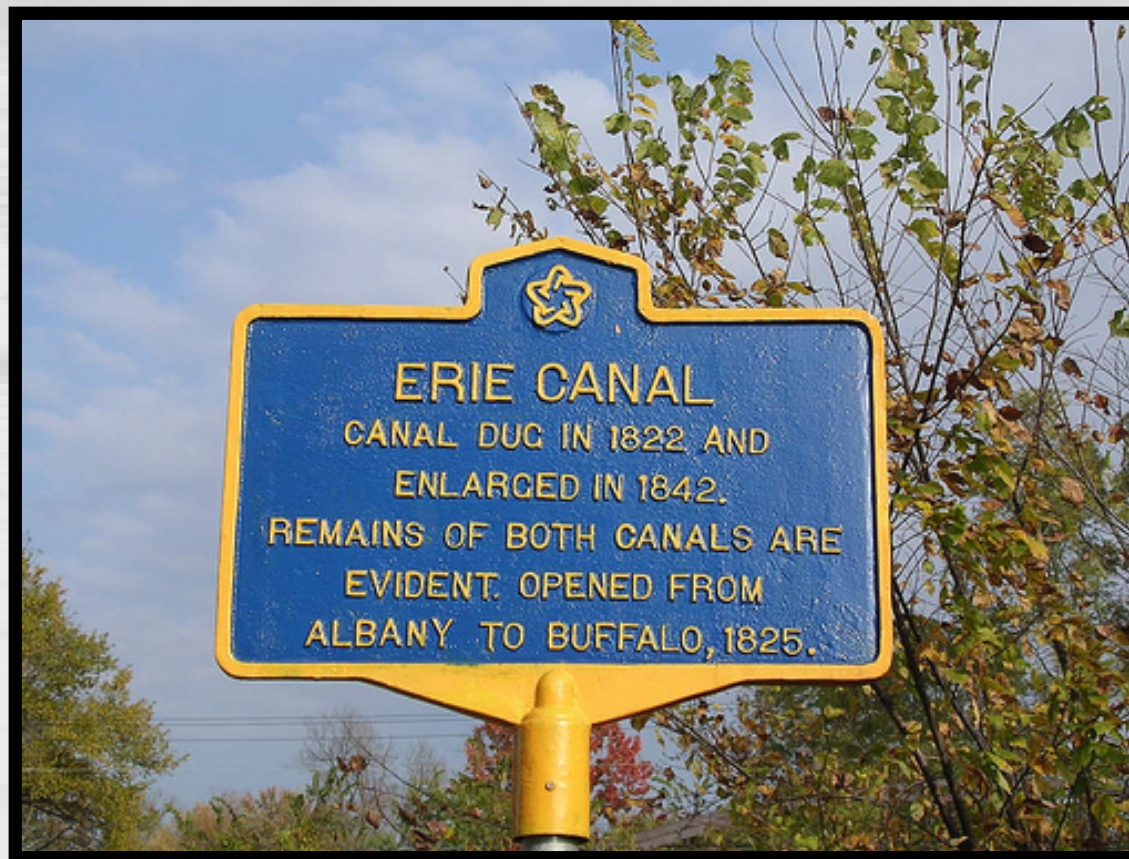
*Canalway Trail Celebration  
(Corning Preserve, Albany)*



*Canal Clean Sweep  
(Canal employees at Alcathy's, Town of Waterford)*



# The NYS Canal System is also... History ALIVE







*Rome*



*Old Erie Lock 52 – Port Byron*



*Chittenango Landing Canal Boat Museum*

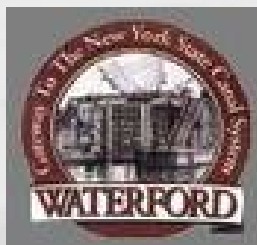
# The NYS Canal System is also... Educational



*Tug Urger: The “Floating Classroom”*



# The NYS Canal System is also... a Team Effort





# Contact Information

**Carmella R. Mantello, Director  
New York State Canal Corporation  
P.O. Box 189, Albany 12201  
Phone: (518) 436 - 3055  
Fax: (518) 471 - 5936  
[www.nyscanals.gov](http://www.nyscanals.gov)**



Photo courtesy Don Sutherland